

FAIR STREET
MUSEUM

7 FAIR STREET
NANTUCKET, MA



ARCHITECTURAL CONSERVATOR
ICR-ICC
INTEGRATED CONSERVATION RESOURCES, INC.
INTEGRATED CONSERVATION CONTRACTING
44-02 11TH STREET, SUITE 604
LONG ISLAND CITY, NY 11101
TELEPHONE: 212.947.4999
WWW.ICR-ICC.COM

**NANTUCKET
HISTORICAL SOCIETY**
15 BROAD STREET
NANTUCKET, MA 02554

NO	DATE	DESCRIPTION

DRAWING TITLE
ROOF PLAN









SCALE AS NOTED
DATE 05.03.2022
DRAWN BY ICR

DRAWING NO.
R-100.00

SHEET 1 OF 5

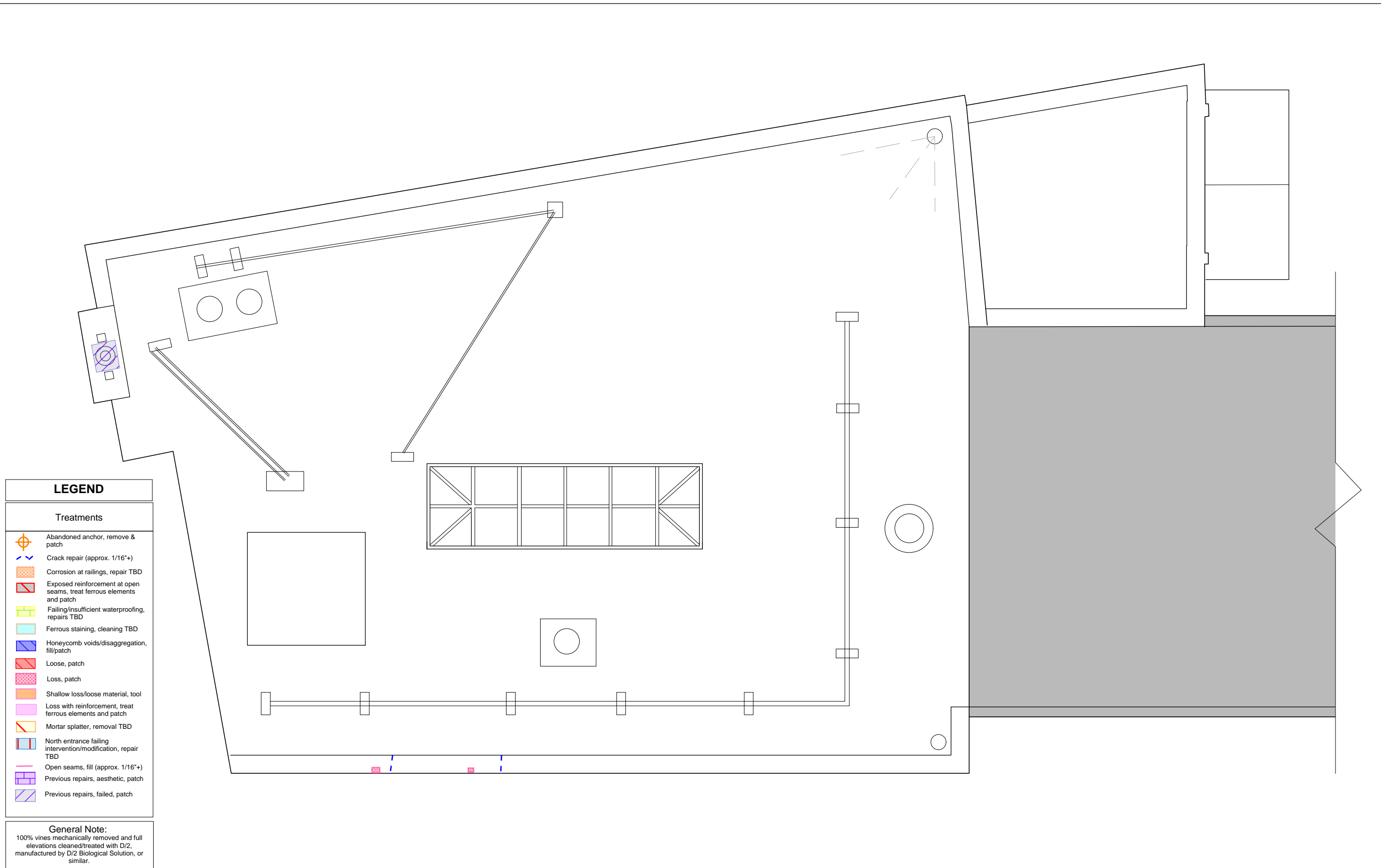
LEGEND

Treatments

-  Abandoned anchor, remove & patch
-  Crack repair (approx. 1/16"+)
-  Corrosion at railings, repair TBD
-  Exposed reinforcement at open seams, treat ferrous elements and patch
-  Failing/insufficient waterproofing, repairs TBD
-  Ferrous staining, cleaning TBD
-  Honeycomb voids/disaggregation, fill/patch
-  Loose, patch
-  Loss, patch
-  Shallow loss/loose material, tool
-  Loss with reinforcement, treat ferrous elements and patch
-  Mortar splatter, removal TBD
-  North entrance failing intervention/modification, repair TBD
-  Open seams, fill (approx. 1/16"+)
-  Previous repairs, aesthetic, patch
-  Previous repairs, failed, patch

General Note:
100% vines mechanically removed and full elevations cleaned/treated with D/2, manufactured by D/2 Biological Solution, or similar.

1 ROOF PLAN
3/16" = 1'-0"



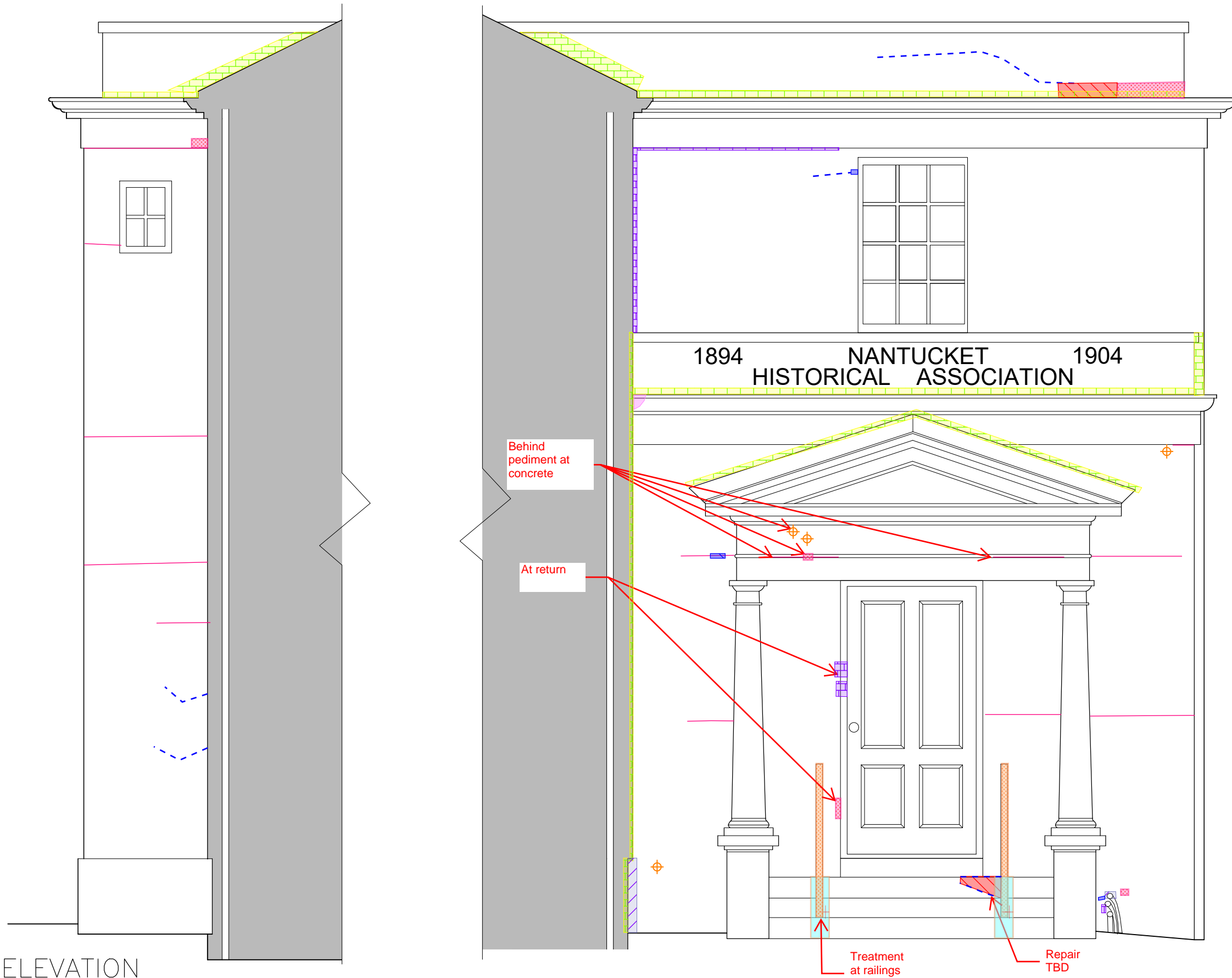
LEGEND

Treatments

-  Abandoned anchor, remove & patch
-  Crack repair (approx. 1/16"+)
-  Corrosion at railings, repair TBD
-  Exposed reinforcement at open seams, treat ferrous elements and patch
-  Failing/insufficient waterproofing, repairs TBD
-  Ferro staining, cleaning TBD
-  Honeycomb voids/disaggregation, fill/patch
-  Loose, patch
-  Loss, patch
-  Shallow loss/loose material, tool
-  Loss with reinforcement, treat ferrous elements and patch
-  Mortar splatter, removal TBD
-  North entrance failing intervention/modification, repair TBD
-  Open seams, fill (approx. 1/16"+)
-  Previous repairs, aesthetic, patch
-  Previous repairs, failed, patch

General Note:

100% vines mechanically removed and full elevations cleaned/treated with D/2, manufactured by D/2 Biological Solution, or similar.



1 EAST ELEVATION
3/8" = 1'-0"

FAIR STREET MUSEUM

7 FAIR STREET
NANTUCKET, MA



ARCHITECTURAL CONSERVATOR

ICR-ICC

INTEGRATED CONSERVATION RESOURCES, INC.
INTEGRATED CONSERVATION CONTRACTING
44-02 11TH STREET, SUITE 604
LONG ISLAND CITY, NY 11101
TELEPHONE: 212.947.4999
WWW.ICR-ICC.COM

NANTUCKET HISTORICAL SOCIETY

15 BROAD STREET
NANTUCKET, MA 02554

NO	DATE	DESCRIPTION

DRAWING TITLE
EAST ELEVATION

SCALE AS NOTED
DATE 05.03.2022
DRAWN BY ICR

DRAWING NO.
R-200.00

SHEET 2 OF 5

LEGEND	
Treatments	
	Abandoned anchor, remove & patch
	Crack repair (approx. 1/16"+)
	Corrosion at railings, repair TBD
	Exposed reinforcement at open seams, treat ferrous elements and patch
	Failing/insufficient waterproofing, repairs TBD
	Ferrous staining, cleaning TBD
	Honeycomb voids/disaggregation, fill/patch
	Loose, patch
	Loss, patch
	Shallow loss/loose material, tool
	Loss with reinforcement, treat ferrous elements and patch
	Mortar splatter, removal TBD
	North entrance failing intervention/modification, repair TBD
	Open seams, fill (approx. 1/16"+)
	Previous repairs, aesthetic, patch
	Previous repairs, failed, patch

General Note:
100% vines mechanically removed and full elevations cleaned/treated with D/2, manufactured by D/2 Biological Solution, or similar.

FAIR STREET MUSEUM

7 FAIR STREET
NANTUCKET, MA



ARCHITECTURAL CONSERVATOR

ICR-ICC

INTEGRATED CONSERVATION RESOURCES, INC.
INTEGRATED CONSERVATION CONTRACTING
44-02 11TH STREET, SUITE 604
LONG ISLAND CITY, NY 11101
TELEPHONE: 212.947.4999
WWW.ICR-ICC.COM

NANTUCKET HISTORICAL SOCIETY

15 BROAD STREET
NANTUCKET, MA 02554

NO	DATE	DESCRIPTION

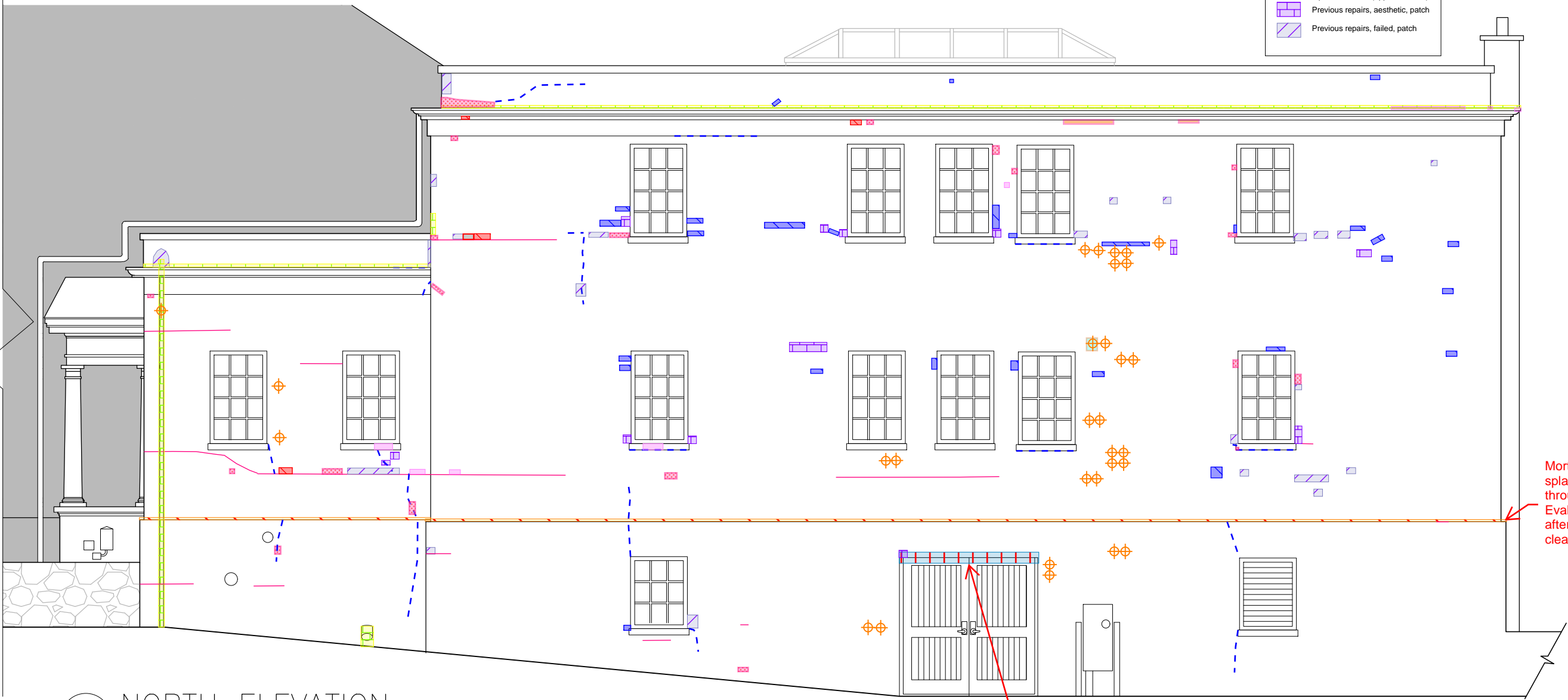
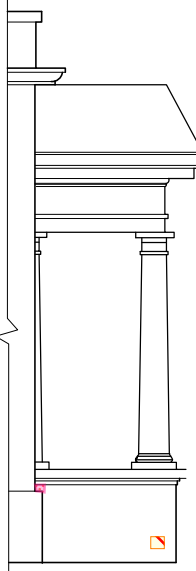
DRAWING TITLE
NORTH ELEVATION

SCALE AS NOTED
DATE 05.03.2022
DRAWN BY ICR

DRAWING NO.
R-201.00

SHEET 3 OF 5

2 PORCH FACING NORTH
3/16" = 1'-0"



1 NORTH ELEVATION
3/16" = 1'-0"

FAIR STREET MUSEUM

7 FAIR STREET
NANTUCKET, MA



ARCHITECTURAL CONSERVATOR

ICR-ICC
INTEGRATED CONSERVATION RESOURCES, INC.
INTEGRATED CONSERVATION CONTRACTING
44-02 11TH STREET, SUITE 604
LONG ISLAND CITY, NY 11101
TELEPHONE: 212.947.4999
WWW.ICR-ICC.COM

NANTUCKET HISTORICAL SOCIETY
15 BROAD STREET
NANTUCKET, MA 02554

NO	DATE	DESCRIPTION

DRAWING TITLE
WEST ELEVATION

SCALE AS NOTED
DATE 05.03.2022
DRAWN BY ICR

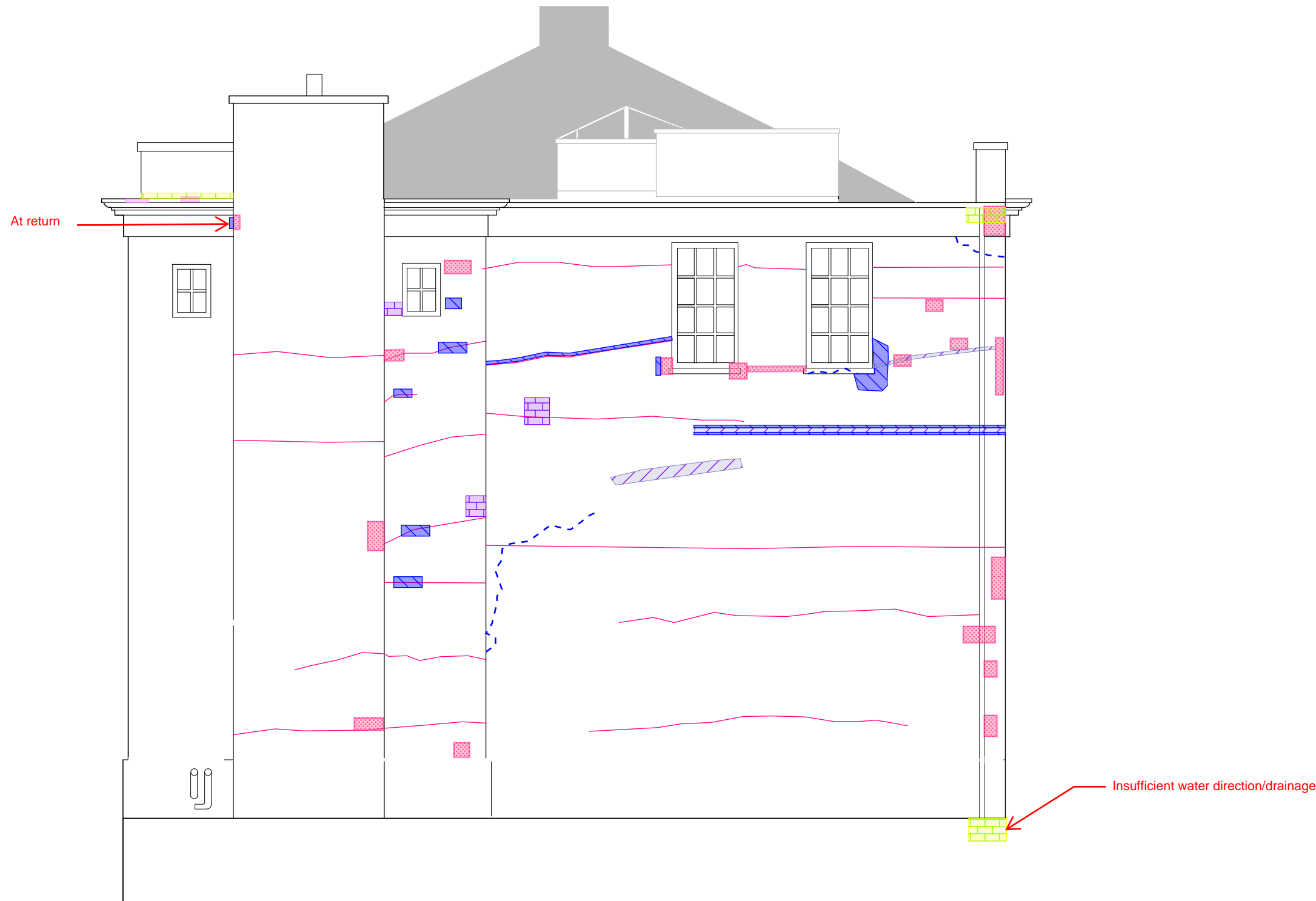
DRAWING NO.
R-202.00

SHEET 4 OF 5

LEGEND

Treatments	
	Abandoned anchor, remove & patch
	Crack repair (approx. 1/16"+)
	Corrosion at railings, repair TBD
	Exposed reinforcement at open seams, treat ferrous elements and patch
	Failing/insufficient waterproofing, repairs TBD
	Ferrous staining, cleaning TBD
	Honeycomb voids/disaggregation, fill/patch
	Loose, patch
	Loss, patch
	Shallow loss/loose material, tool
	Loss with reinforcement, treat ferrous elements and patch
	Mortar splatter, removal TBD
	North entrance failing intervention/modification, repair TBD
	Open seams, fill (approx. 1/16"+)
	Previous repairs, aesthetic, patch
	Previous repairs, failed, patch

General Note:
100% vines mechanically removed and full elevations cleaned/treated with D/2, manufactured by D/2 Biological Solution, or similar.



1 WEST ELEVATION
1/4" = 1'-0"

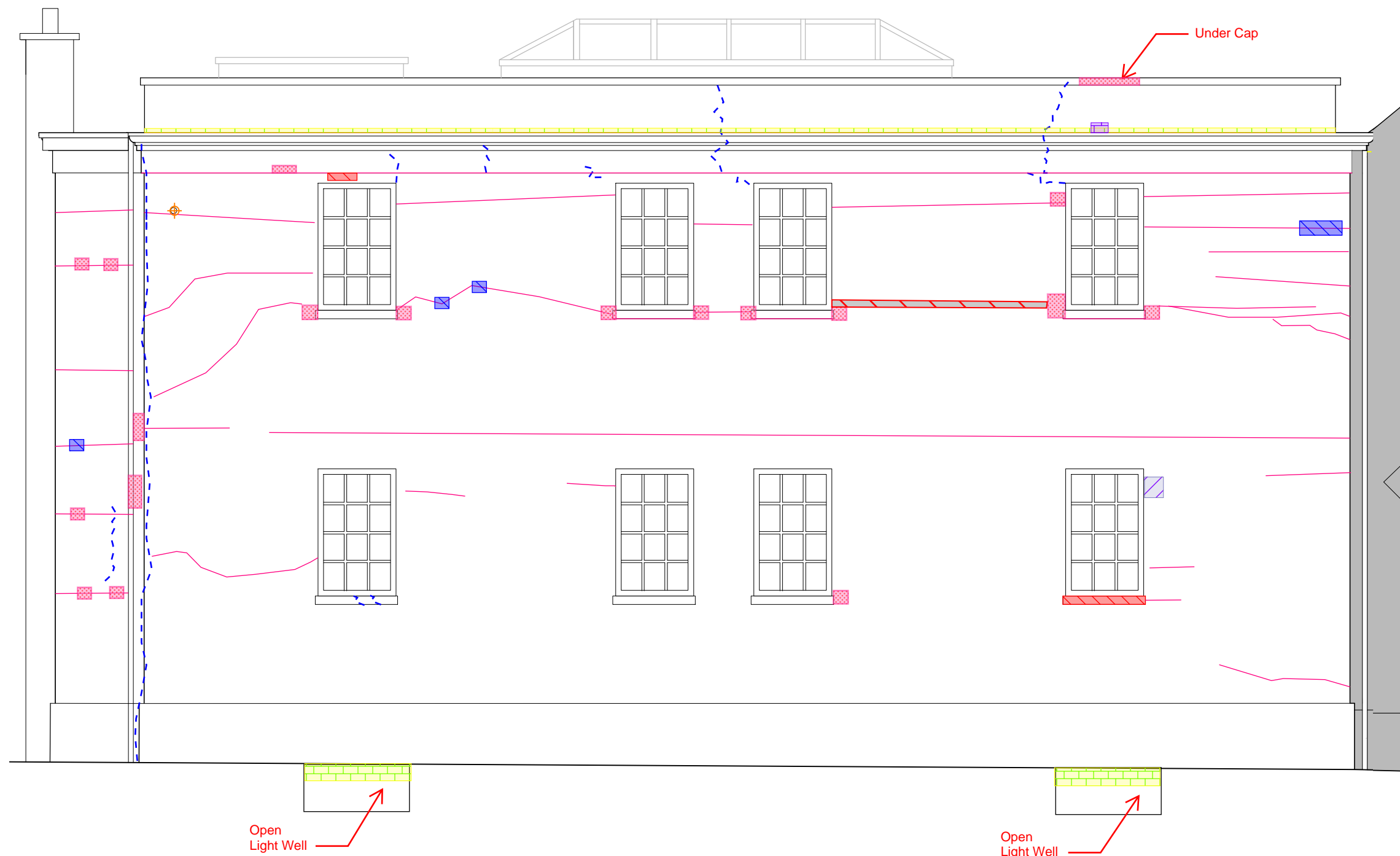
FAIR STREET MUSEUM

7 FAIR STREET
NANTUCKET, MA


















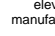
ARCHITECTURAL CONSERVATOR
ICR-ICC
INTEGRATED CONSERVATION RESOURCES, INC.
INTEGRATED CONSERVATION CONTRACTING
44-02 11TH STREET, SUITE 604
LONG ISLAND CITY, NY 11101
TELEPHONE: 212.947.4999
WWW.ICR-ICC.COM

NANTUCKET HISTORICAL SOCIETY
15 BROAD STREET
NANTUCKET, MA 02554



LEGEND

Treatments

-  Abandoned anchor, remove & patch
-  Crack repair (approx. 1/16"+)
-  Corrosion at railings, repair TBD
-  Exposed reinforcement at open seams, treat ferrous elements and patch
-  Falling/insufficient waterproofing, repairs TBD
-  Ferro staining, cleaning TBD
-  Honeycomb voids/disaggregation, fill/patch
-  Loose, patch
-  Loss, patch
-  Shallow loss/loose material, tool
-  Loss with reinforcement, treat ferrous elements and patch
-  Mortar splatter, removal TBD
-  North entrance falling intervention/modification, repair TBD
-  Open seams, fill (approx. 1/16"+)
-  Previous repairs, aesthetic, patch
-  Previous repairs, failed, patch

General Note:
100% vines mechanically removed and full elevations cleaned/treated with D/2, manufactured by D/2 Biological Solution, or similar.

1 SOUTH ELEVATION
1/4" = 1'-0"

NO	DATE	DESCRIPTION

DRAWING TITLE
SOUTH ELEVATION

SCALE AS NOTED
DATE 05.03.2022
DRAWN BY ICR

DRAWING NO.
R-203.00
SHEET 5 OF 5