



# Nantucket Memorial Airport

## Operations FY2017 - FY2018

	CY 2017						CY 2018						TOTAL
	JUL	AUG	SEP	OCT	NOV	DEC	JAN	FEB	MAR	APR	MAY	JUN	
Air Carrier	506	489	269	82	0	0	4	0	0	0	74	302	1,726
Air Taxi	8,024	7,911	4,679	4,118	3,526	3,166	2,159	1,565	1,543	2,180	3,689	5,199	47,759
General Aviation	5,893	6,374	3,398	3,462	3,138	3,049	1,710	1,045	865	1,258	1,964	3,142	35,298
Military	68	53	60	78	95	62	52	44	52	42	70	52	728
Intinerant	14,491	14,827	8,406	7,740	6,759	6,277	3,925	2,654	2,460	3,480	5,797	8,695	85,511
Civil	39	16	12	8	12	47	8	10	2	10	25	0	189
Military	0	0	0	0	0	0	0	0	0	0	0	0	0
Local	39	16	12	8	12	47	8	10	2	10	25	0	189
Operations	14,530	14,843	8,418	7,748	6,771	6,324	3,933	2,664	2,462	3,490	5,822	8,695	85,700
% Change	-12.14%	-5.14%	-27.19%	-8.05%	-1.53%	-6.39%	-22.29%	-42.46%	-50.72%	-34.30%	-29.16%	-20.16%	

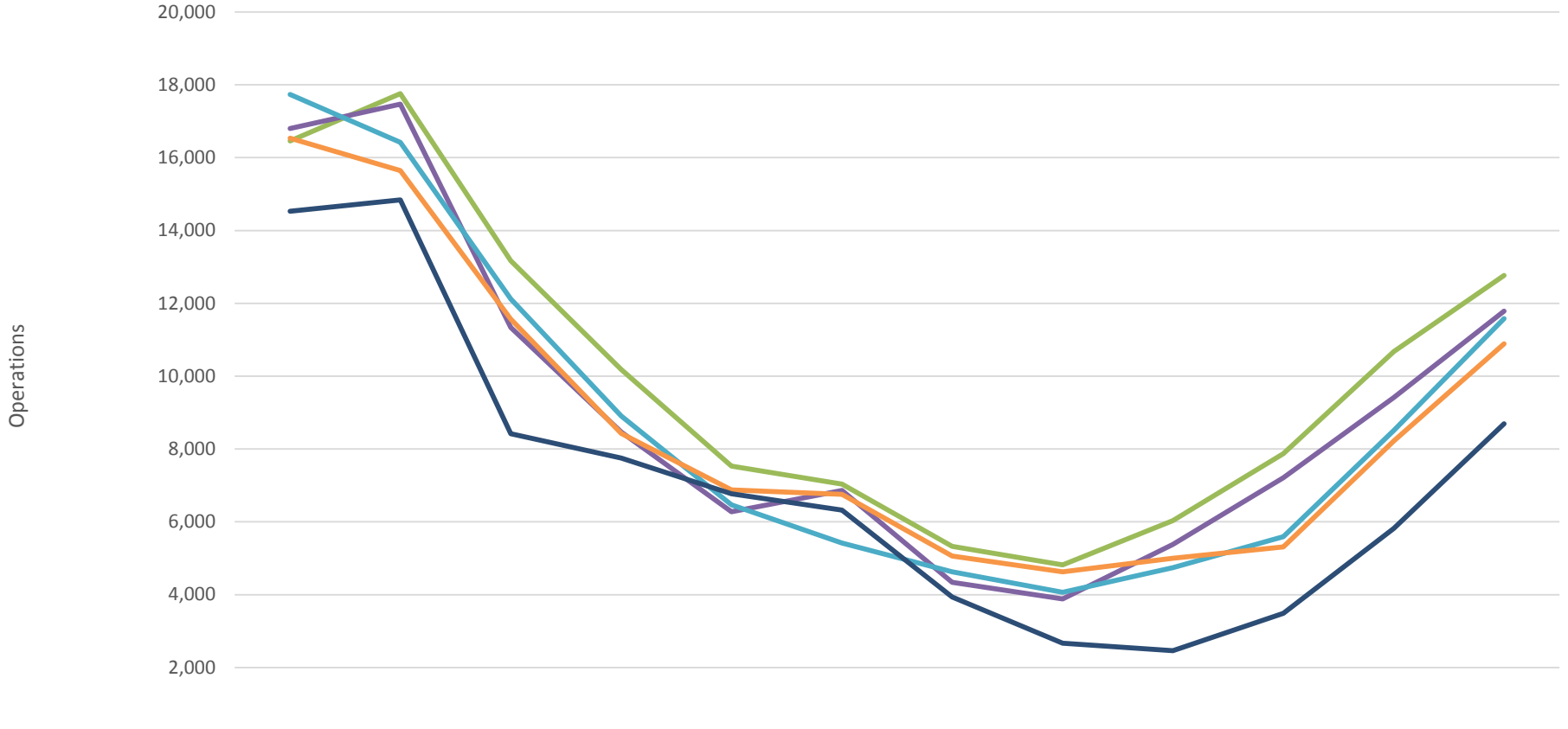
**June 2017 – June 2018 Down -20.16%**  
**YTD Down -18.31%**

	JUL	AUG	SEP	OCT	NOV	DEC	JAN	FEB	MAR	APR	MAY	JUN	TOTAL	% Change
Operations FY2014	16,459	17,761	13,170	10,184	7,532	7,040	5,329	4,821	6,031	7,870	10,675	12,767	119,639	
Operations FY2015	16,805	17,470	11,337	8,463	6,276	6,861	4,341	3,883	5,378	7,209	9,416	11,786	109,225	-8.70%
Operations FY2016	17,735	16,423	12,117	8,909	6,465	5,419	4,628	4,062	4,742	5,594	8,508	11,584	106,186	-2.78%
Operations FY2017	16,538	15,647	11,562	8,426	6,876	6,756	5,061	4,630	4,996	5,312	8,219	10,890	104,913	-1.20%
Operations FY2018	14,530	14,843	8,418	7,748	6,771	6,324	3,933	2,664	2,462	3,490	5,822	8,695	85,700	-18.31%



# Nantucket Memorial Airport

Operations FY 2014-2018



	JUL	AUG	SEP	OCT	NOV	DEC	JAN	FEB	MAR	APR	MAY	JUN
Operations FY2014	16,459	17,761	13,170	10,184	7,532	7,040	5,329	4,821	6,031	7,870	10,675	12,767
Operations FY2015	16,805	17,470	11,337	8,463	6,276	6,861	4,341	3,883	5,378	7,209	9,416	11,786
Operations FY2016	17,735	16,423	12,117	8,909	6,465	5,419	4,628	4,062	4,742	5,594	8,508	11,584
Operations FY2017	16,538	15,647	11,562	8,426	6,876	6,756	5,061	4,630	4,996	5,312	8,219	10,890
Operations FY2018	14,530	14,843	8,418	7,748	6,771	6,324	3,933	2,664	2,462	3,490	5,822	8,695



# Nantucket Memorial Airport

Southwest Ramp General Aviation Operations															
	JUL	AUG	SEP	OCT	NOV	DEC	JAN	FEB	MAR	APR	MAY	JUN	Total	% Change	
Operations FY2014	4,710	4,974	2,518	1,082	544	678	212	218	310	726	1,598	3,090	20,660		
Operations FY2015	5,112	5,120	2,558	1,358	606	654	178	146	242	868	2,004	3,070	21,916	5.7%	
Operations FY2016	5,988	5,680	3,344	1,414	800	868	312	344	462	794	2,120	3,536	25,662	14.6%	
Operations FY2017	6,334	6,026	3,570	1,858	1,180	1,214	430	410	362	916	2,064	3,600	27,964	8.2%	
Operations FY2018	6,096	6,262	3,146	1,834	1,208	1,082	336	418	468	940	1,962	3,702	27,454	-1.9%	
June 2018 vs. June 2017 Up 2.8%															

Southwest Ramp General Aviation Operations FY2014-2018

