



Nantucket Memorial Airport

Operations FY2018 - FY2019

	CY 2018						CY 2019						TOTAL
	JUL	AUG	SEP	OCT	NOV	DEC	JAN	FEB	MAR	APR	MAY	JUN	
Air Carrier	513	504	260	67	5	0	0	0	0	0	109	431	1,889
Air Taxi	6,808	6,767	4,920	3,148	2,418	1,843	1,567	1,319	1,607	2,072	3,623	5,553	41,645
General Aviation	4,335	4,602	2,777	1,919	1,355	1,184	954	795	1,019	1,251	2,171	3,058	25,420
Military	36	86	26	70	46	24	68	51	23	72	35	100	637
Intinerant	11,692	11,959	7,983	5,204	3,824	3,051	2,589	2,165	2,649	3,395	5,938	9,142	69,591
Civil	0	16	30	26	16	14	8	0	6	76	17	2	211
Military	0	0	0	0	0	0	0	4	0	2	0	9	15
Local	0	16	30	26	16	14	8	0	6	78	17	11	222
Operations	11,692	11,975	8,013	5,230	3,840	3,065	2,597	2,169	2,655	3,473	5,955	9,153	69,817
% Change	-19.53%	-19.32%	-4.81%	-32.50%	-43.29%	-51.53%	-33.97%	-18.58%	7.84%	-0.49%	2.28%	5.27%	-18.53%

June 2018 – June 2019 UP 5.27%
YTD Down – 18.53%

	JUL	AUG	SEP	OCT	NOV	DEC	JAN	FEB	MAR	APR	MAY	JUN	TOTAL	% Change
Operations FY2015	16,805	17,470	11,337	8,463	6,276	6,861	4,341	3,883	5,378	7,209	9,416	11,786	109,225	
Operations FY2016	17,735	16,423	12,117	8,909	6,465	5,419	4,628	4,062	4,742	5,594	8,508	11,584	106,186	-2.78%
Operations FY2017	16,538	15,647	11,562	8,426	6,876	6,756	5,061	4,630	4,996	5,312	8,219	10,890	104,913	-1.20%
Operations FY2018	14,530	14,843	8,418	7,748	6,771	6,324	3,933	2,664	2,462	3,490	5,822	8,695	85,700	-18.31%
Operations FY2019	11,692	11,975	8,013	5,230	3,840	3,065	2,597	2,169	2,655	3,473	5,955	9,153	69,817	-18.53%

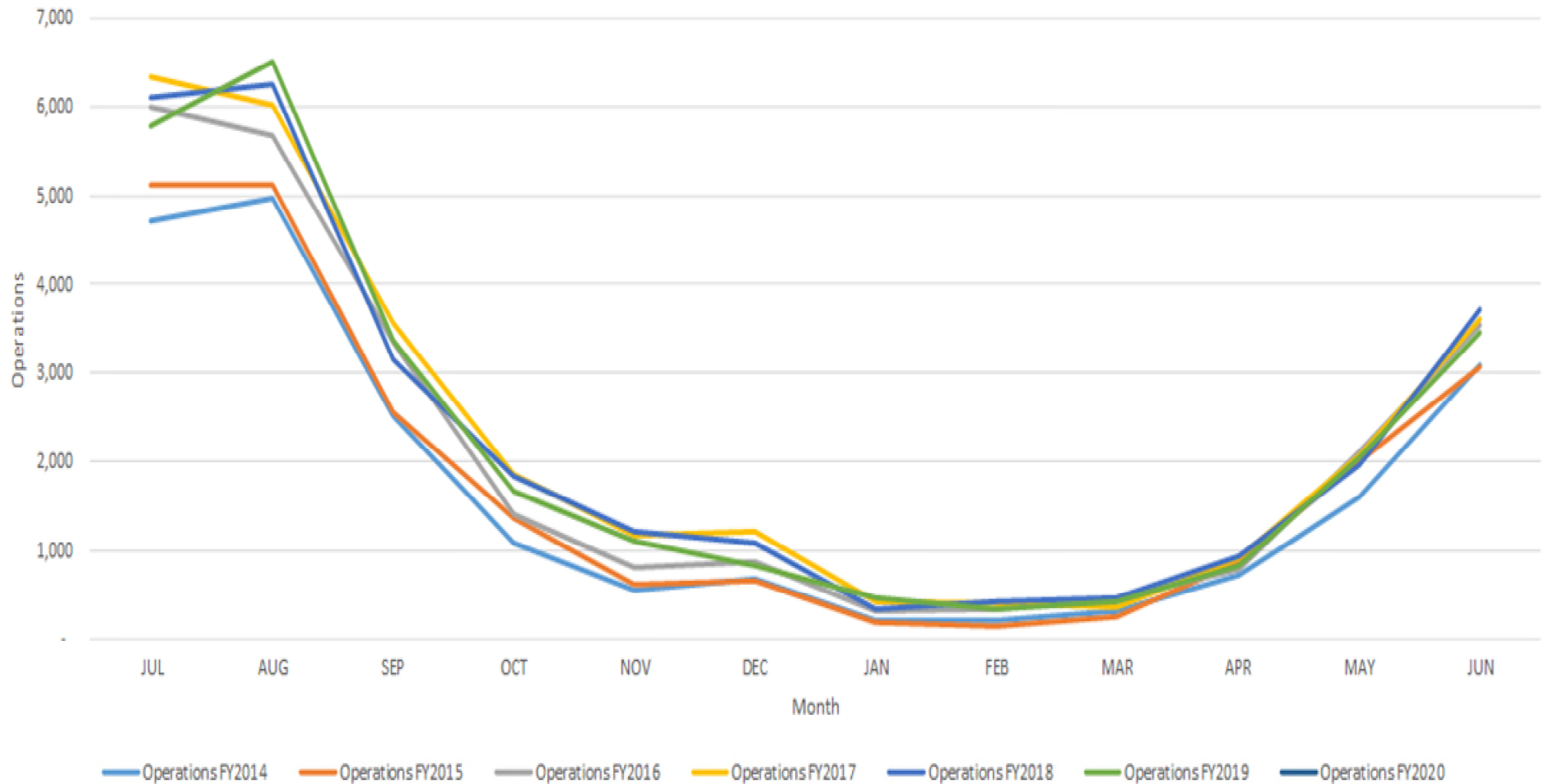


Nantucket Memorial Airport

SW Ramp Operations

July 2020 vs. July 2019 Up 1.8%

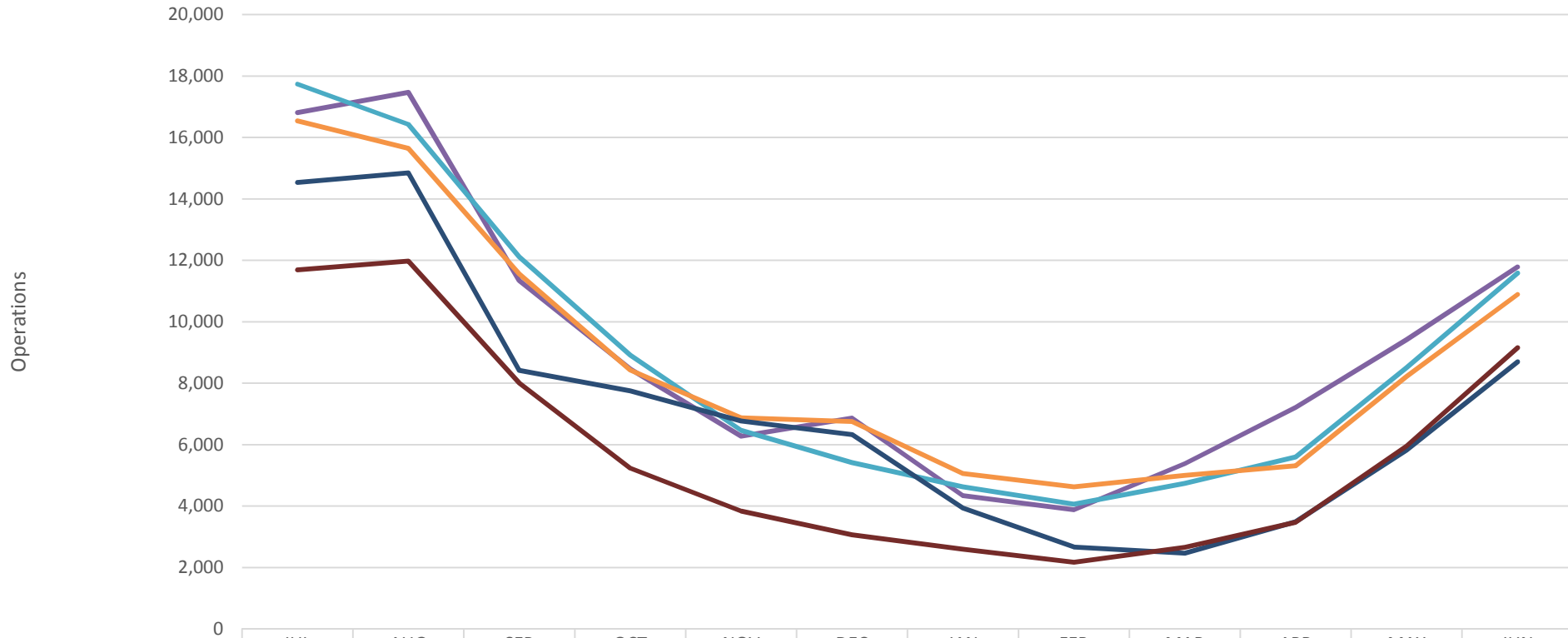
Southwest Ramp General Aviation Operations FY2014-2020





Nantucket Memorial Airport

Operations FY 2015-2019



	JUL	AUG	SEP	OCT	NOV	DEC	JAN	FEB	MAR	APR	MAY	JUN
Operations FY2015	16,805	17,470	11,337	8,463	6,276	6,861	4,341	3,883	5,378	7,209	9,416	11,786
Operations FY2016	17,735	16,423	12,117	8,909	6,465	5,419	4,628	4,062	4,742	5,594	8,508	11,584
Operations FY2017	16,538	15,647	11,562	8,426	6,876	6,756	5,061	4,630	4,996	5,312	8,219	10,890
Operations FY2018	14,530	14,843	8,418	7,748	6,771	6,324	3,933	2,664	2,462	3,490	5,822	8,695
Operations FY2019	11,692	11,975	8,013	5,230	3,840	3,065	2,597	2,169	2,655	3,473	5,955	9,153