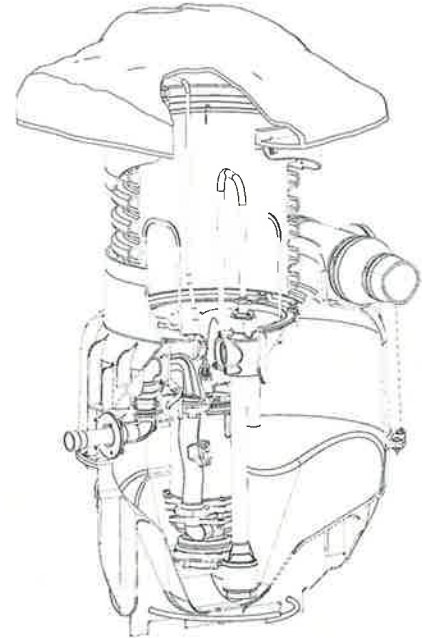


**Specifications:**

inches  
(mm)

- BASIN** ..... Engineered Polypropylene Copolymer, 2-piece construction, factory assembled with preformed corrosion resistant rebar installed. Includes POD for pump support and orientation
- RISER**..... HDPE 18" Dia. (457mm) corrugated drainpipe, day-of-installation adjustment sets basin depth [limit 9ft. 6inches (2.9m) to bottom of basin]
- DISCHARGE OUTLET**..... 1-1/4" NPT Flexible, stainless steel. Connects to a basin mounted bronze tank receiver.
- INLET** ..... 3 positions, 4" (Sch 40/80 or SDR35) Flexible Inlet Flange (For Field Installation)
- COVER** ..... Rock-Shaped Polyethylene Cover, interlocking with Riser Adapter, vented or unvented. Keyed lock included.  
Load rating of 150 lb per sq ft.
- ALARM BOX**..... Model 1500 Alarm Panel, NEMA 4X Non-metallic Enclosure with Keyed Lock, Alarm Light, Alarm Horn w/ Push Button, Pump and Alarm Circuit Breakers
- DIRECT BURIAL CABLE** .... 12/5 Type TC, STOOOW Round U.L. Listed. 30ft (9m) length standard
- MOVEABLE DISCHARGE FITTING w/ CHECK VALVE:** (Removed with Pump)
  - Housing*..... Powder Coated Cast Iron
  - Diaphragm*..... Fiber Reinforced Neoprene
  - Flapper* ..... Fiber Reinforced Nitrile
  - Size*..... 1-1/4" Full Port
  - Valve Seat*..... Bronze
- BALL VALVE:** ..... Toggle actuated via polypropylene harness from top side, removable without basin entry
  - Material*..... Bronze, with Stainless Steel ball & stem, and Teflon seats
  - Size*..... 1-1/4" Full Port
- LIFTING HARNESS** ..... 1/8" x 3/4" Polypropylene (POD). 1/2" Dia. Polypropylene (PUMP) Breaking strength 3750 lbs.
- HARDWARE** ..... 300 Series Stainless Steel
- LEVEL CONTROL** ..... ESPS™ – Environmentally sealed pressure switch with CPVC housing, Nitrile diaphragm, Custom molded quick connect for sealing and strain relief.
- ANTI-SIPHON** ..... Integral to cast iron motor housing.
  - Flapper*..... Fiber Reinforced Nitrile
  - Seat*..... Valox with stainless steel rivet
- PUMP** ..... OGP2022CE (Std), 240 Volt, 1 Phase
- OPTIONS** ..... Direct Burial Cable lengths, Rock Cover Vented or Flood Plain, Depth, OGVF2022CE Pump, Model 1550 Alarm Panel w/Generator Receptacle Flat Fiberglass Cover, Indoor Alarm



**EcoTRAN™ System**

For use with OGP and OGV pumps, 1 1/4" NPT

- Vented 52"-74" Depth
- Vented 76"-114" Depth
- Flood Plain 52"-74" Depth
- Flood Plain 76"-114" Depth

This product may be covered by one or more of the following patents and other patent(s) pending:  
US Patent 7,357,341 & US Patent 7,578,657



LR16567  
NSF 46



CERTIFIED TO  
NSF / ANSI 46



**LISTED** BASIN ASSEMBLY E151564 2N87  
UL1951

**BARNES**



### Short Set EcoTRAN Package - Vented Cover

Direct Burial Cable Length	OGP Pump				OGV Pump			
	Standard Alarm Box		Alarm with Generator Receptacle		Standard Alarm		Alarm with Generator Receptacle	
	Part No.	SC	Part No.	SC	Part No.	SC	Part No.	SC
30 Ft.	122848	NS	122854	CF	122851	NS	122857	CF
50 Ft.	122849	NS	122855	CF	122852	NS	122858	CF
100 Ft.	122850	NS	122856	CF	122853	NS	122859	CF

### Long Set EcoTRAN Package - Vented Cover

Direct Burial Cable Length	OGP Pump				OGV Pump			
	Standard Alarm Box		Alarm with Generator Receptacle		Standard Alarm		Alarm with Generator Receptacle	
	Part No.	SC	Part No.	SC	Part No.	SC	Part No.	SC
30 Ft.	124146	NS	124152	CF	124149	NS	124155	CF
50 Ft.	124147	NS	124153	CF	124150	NS	124156	CF
100 Ft.	124148	NS	124154	CF	124151	NS	124157	CF

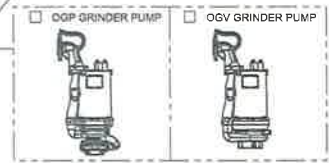
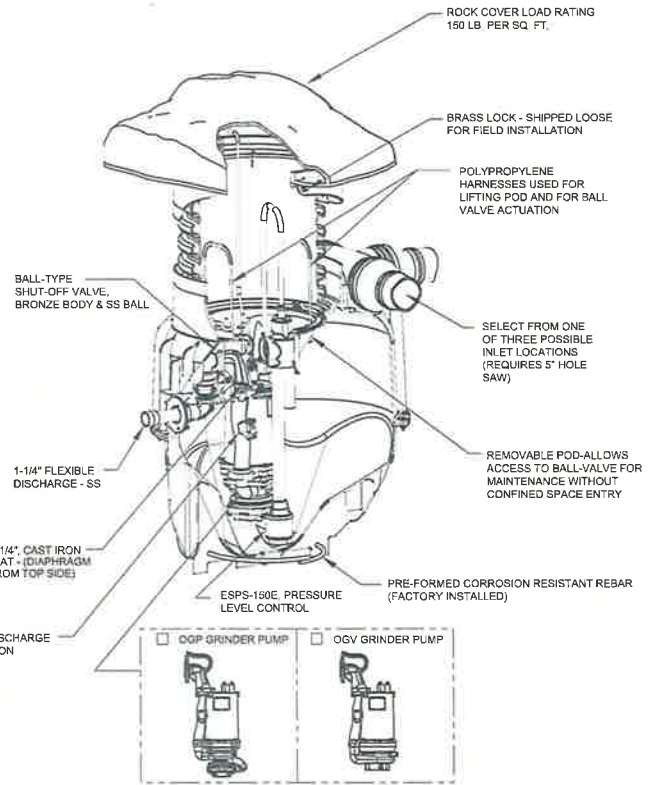
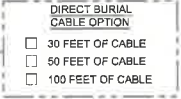
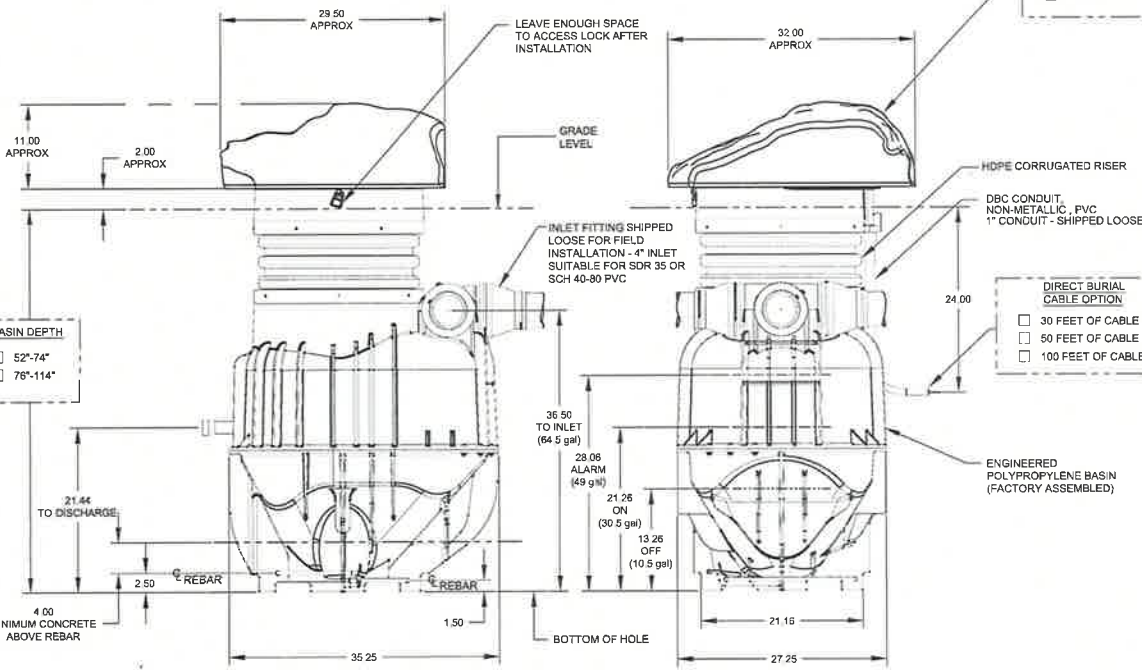
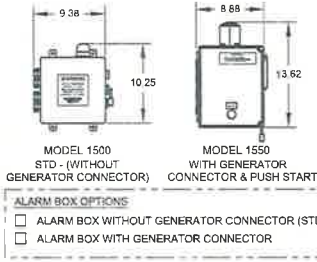
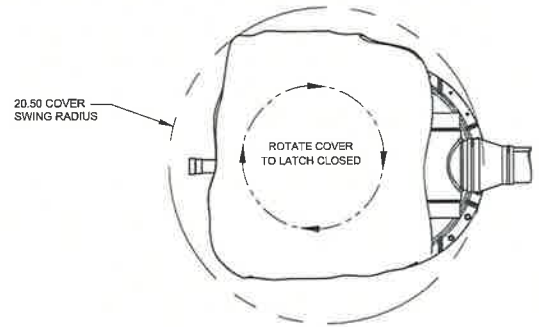
### Short Set EcoTRAN Package - Non-Vented Cover

Direct Burial Cable Length	OGP Pump				OGV Pump			
	Standard Alarm Box		Alarm with Generator Receptacle		Standard Alarm		Alarm with Generator Receptacle	
	Part No.	SC	Part No.	SC	Part No.	SC	Part No.	SC
30 Ft.	122860	CF	122866	CF	122863	CF	122869	CF
50 Ft.	122861	CF	122867	CF	122864	CF	122870	CF
100 Ft.	122862	CF	122868	CF	122865	CF	122871	CF

### Long Set EcoTRAN Package - Non-Vented Cover

Direct Burial Cable Length	OGP Pump				OGV Pump			
	Standard Alarm Box		Alarm with Generator Receptacle		Standard Alarm		Alarm with Generator Receptacle	
	Part No.	SC	Part No.	SC	Part No.	SC	Part No.	SC
30 Ft.	124158	CF	124164	CF	124161	CF	124167	CF
50 Ft.	124159	CF	124165	CF	124162	CF	124168	CF
100 Ft.	124160	CF	124166	CF	124163	CF	124169	CF

<p><b>1. Depth</b>          52"-74" (1.3m-1.8m) Vented          76"-114" (1.9m-2.9m) Vented          52"-74" (1.3m-1.8m) Flood Plain          76"-114" (1.9m-2.9m) Flood Plain</p> <p><b>2. Pump Type (240V / 1 Phase)</b>          2 HP OGP2022CE (STD.)          2 HP OGVF2022CE</p> <p><b>3. Direct Burial Cable Length</b>          30 Feet (STD.)          50 Feet          100 Feet</p> <p><b>4. Rock Cover Options (Select One)</b>          Sandstone          Flood Plain, Sandstone</p> <p><b>5. Alarm Box Options</b>          Model 1500 w/Alarm Light, Horn,          Silence Button &amp; Circuit Breaker          Model 1550, includes 1500 features, Plus          Generator Receptacle and Automatic          Transfer Switch</p> <p><b>NOTES!</b></p> <ol style="list-style-type: none"> <li>1. Unit shipped boxed complete including Basin Package, Pump, Level Control and Alarm Box (Riser shipped separately).</li> <li>2. Riser depth can be shortened in the field during installation.</li> <li>3. All moving parts and seals serviceable from ground level without entry into the basin.</li> <li>4. Factory pre-assembled EcoTRAN to specific depth available. Contact locals distributor for additional details.</li> </ol>	
---	--



NOTES  
1. ALL DIMENSIONS ARE ±1/4\"/>

THIS PRINT IS AND CONTAINS PROPRIETARY INFORMATION OWNED EXCLUSIVELY BY CRANE PUMPS & SYSTEMS, INC. THIS RESTRICTION INCLUDES, BUT IS NOT LIMITED TO THE CONDITION THAT THIS PRINT WILL ONLY BE USED AS A RECORD OR TO IDENTIFY OR INSPECT PARTS OR FOR OTHER INFORMATION PURPOSES, AND WILL NOT BE USED TO MANUFACTURE OR PROCURE THE MANUFACTURE OF THE PARTS SHOWN IN THIS PRINT BY ANY OTHER SOURCE THAN CRANE PUMPS & SYSTEMS, INC.

THIS DRAWING IS APPROVED FOR UNCONTROLLED DISTRIBUTION

AS A RESULT OF BARNES CONSTANT PRODUCT IMPROVEMENT PROGRAM, PRODUCT CHANGES MAY OCCUR. AS SUCH, BARNES RESERVES THE RIGHT TO CHANGE PRODUCT WITHOUT PRIOR WRITTEN NOTIFICATION

WWW.BARNES-PS.COM SHEET 1 OF 1

TITLE		CAGE NO
SIMPLEX, ECO TRAN SYSTEM, OGP, OGV		96046
DWG NO	REV	
CD119621	E	
CRANE PUMPS & SYSTEMS		


## INDOOR MESSAGING ALARM SYSTEM

**Easy-to-install indoor alarm system with WiFi connectivity, remote notification, battery backup, and auto reset.**

The system monitors and reports grinder pump alarm condition (contact closure), including sump high water level (float switch), or under/over temperature alarms. When the contact closes, the indoor installed alarm notifies the user (audible and visual alarm) and remotely via SMS text messages and/or emails over a WiFi or Ethernet network to a smartphone, tablet or computer. The horn can be silenced when the alarm is active, but the alarm light remains on until the condition is cleared. Once the condition is cleared, the alarm will automatically reset.

No cellular connection needed (no monthly fees), but it is necessary for the home owner to have a reliable WiFi network and connection to the internet for this alarm to send remote notifications. Hard wire connection is made between the outdoor grinder pump control panel and indoor alarm. Text message notifications can be sent to a cell phone with an active SMS service.

### FEATURES

- NEMA 1 enclosure rated for indoor use.
- Automatic alarm reset.
- Red "alarm" light, green "power on" light, blue "network status" light, alarm "test" switch, horn "silence" switch, and WiFi Protected Setup (WPS) connection button.
- WiFi connectivity for remote alarm reporting
  - WiFi Protected Setup (WPS) push-button connect feature  for simplified connection.
  - Manual WiFi setup done through Ethernet connection.
- Ethernet connectivity for remote alarm reporting - for cabled connection to router or modem (cable not included).
- Notifies the user via text and/or email notifications of the following conditions: Alarm, Power Lost, Power Restored, Low Battery, and Alarm Offline.  
**NOTE: Installation of an Uninterruptible Power Supply (UPS) on internet modem and wireless router is recommended. The internet connection must be maintained to receive notifications.**
- Notifies up to 4 contacts (2 text and 2 email contacts).
- Alarm horn sounds at 87 decibels at 10 feet (3 meters).
- Can be used with any switching mechanism rated to include 1 amp, 9 VDC load.
- If primary power fails, the alarm system continues to work locally due to battery backup feature. (battery not included.)  
**NOTE: A Power Lost notification will be sent when entering battery backup mode, but other email and text notifications will not be sent in this mode.**
- Complete package includes standard SJE SignalMaster<sup>®</sup> control switch with 15 feet (4.57 meters) of cable and mounting clamp.
- Switching mechanism operates on low voltage and is isolated from the power line to reduce the possibility of shock.
- Auxiliary alarm contacts for easy attachment of remote devices
- Low battery chirp.
- Easy access battery compartment.
- External terminal block for easy float switch installation.
- CSA Certified.
- Five-year limited warranty.

### SPECIFICATIONS

#### VOLTAGE FOR 120 VAC MODEL:

Primary: 120 VAC, 60 Hz, 2.4 watts max.  
(alarm condition)  
Secondary: 9 VDC

**BATTERY BACKUP POWER:** 9 VDC

**ALARM ENCLOSURE:** 6 x 4 x 2.25 inch  
(15.24 x 10.16 x 5.71 cm), NEMA 1 plastic.

**ALARM HORN:** 87 decibels at 10 feet  
(3 meters)

#### AUXILIARY ALARM CONTACTS

Voltage: 120 VAC  
Current: 0.5 amps maximum N/O  
0.5 amps maximum N/C

**POWER CORD:** 6 foot (1.8 meter)

#### FLOAT SWITCH CONNECTION TERMINAL:

For float switch connection only. Do not apply power. (Voltage across terminals is 8-9 VDC).

#### FLOAT SWITCH: SJE SignalMaster<sup>®</sup> control switch with mounting clamp

Cable: 15 feet (4.57 meters), flexible 18 gauge, 2 conductor (UL) SJOW, water-resistant (CPE)

Float: 2.74 inch diameter x 4.83 inch long (7.0 cm x 12.3 cm), high impact, corrosion resistant polypropylene housing for use in sewage and water up to 140°F (60°C)

**WiFi:** Connect using push-button WiFi Protected Setup (WPS) or manually by using Ethernet connection (ethernet cable not provided). WPA2 security required on wireless router.

**ETHERNET:** Requires an ethernet connection (ethernet cable not provided).

**NOTE:** Cellular WiFi hotspots are not recommended for use with this WiFi alarm, as intermittent or unreliable notification service can result.