



Nantucket Memorial Airport

# Operations FY2019 - FY2020

	CY 2019						CY 2020						TOTAL	
	JUL	AUG	SEP	OCT	NOV	DEC	JAN	FEB	MAR	APR	MAY	JUN		
Air Carrier	674	676	278	72	2	0	0	0	0	0	0	35	1,737	
Air Taxi	8,421	8,406	6,237	3,453	2,633	2,428	1,680	1,547	1,433	852	1,019	2,093	40,202	
General Aviation	5,208	5,196	3,232	1,703	1,543	1,495	1,128	1,095	807	423	768	1,534	24,132	
Military	47	79	51	58	21	45	50	60	64	58	30	19	582	
Intinerant	14,350	14,357	9,798	5,286	4,199	3,968	2,858	2,702	2,304	1,333	1,814	3,681	66,650	
Civil	14	10	28	22	122	152	118	57	96	37	4	48	708	
Military	0	0	4	0	2	9	0	10	4	6	4	0	39	
Local	14	10	32	22	124	161	118	67	100	43	8	48	747	
Operations	14,364	14,367	9,830	5,308	4,323	4,129	2,976	2,769	2,404	1,376	1,825	3,729	67,400	
% Change	22.85%	19.97%	22.68%	1.49%	12.58%	34.71%	14.59%	27.66%	-9.45%	-60.38%	-69.35%	-59.26%	-3.46%	

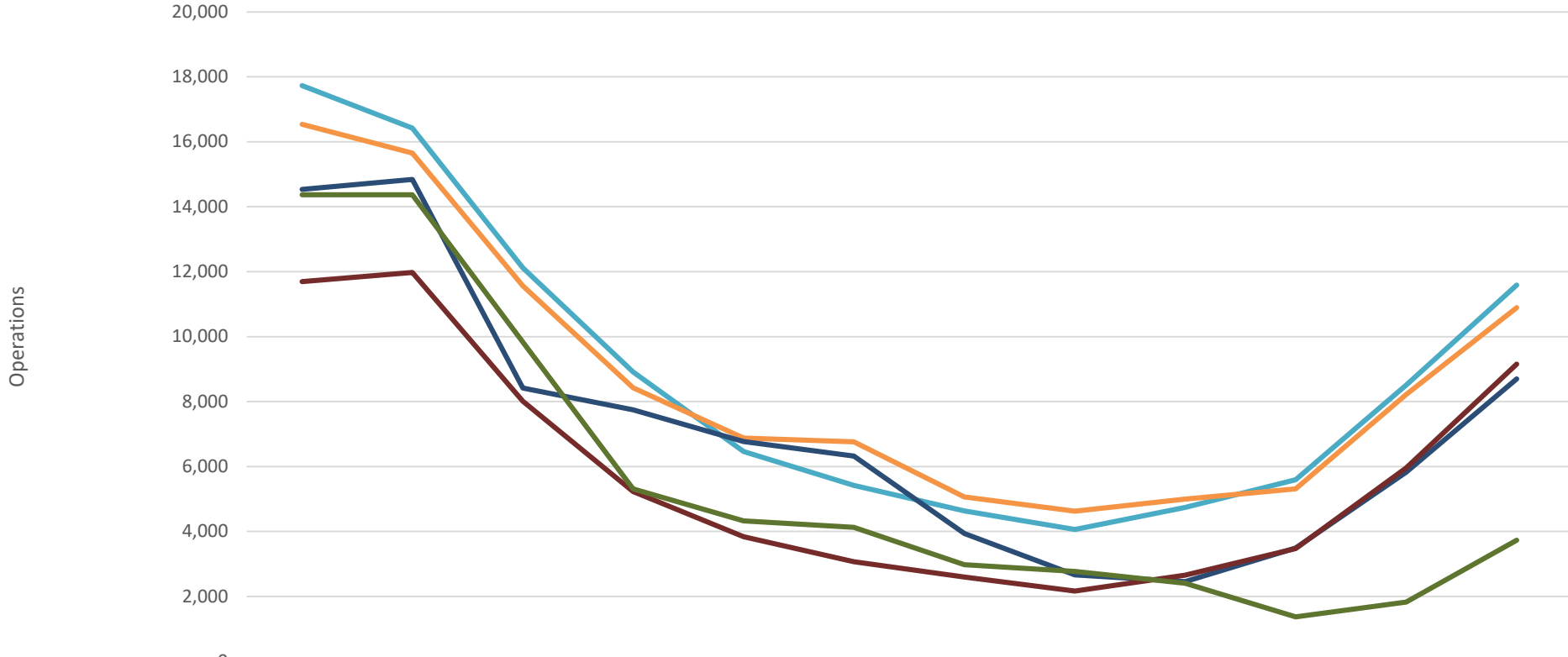
**JUNE 2019 – JUNE 2020 Down -59.26%**  
**YTD Down -3.46%**

	JUL	AUG	SEP	OCT	NOV	DEC	JAN	FEB	MAR	APR	MAY	JUN	TOTAL	% Change
Operations FY2015	16,805	17,470	11,337	8,463	6,276	6,861	4,341	3,883	5,378	7,209	9,416	11,786	109,225	
Operations FY2016	17,735	16,423	12,117	8,909	6,465	5,419	4,628	4,062	4,742	5,594	8,508	11,584	106,186	-2.78%
Operations FY2017	16,538	15,647	11,562	8,426	6,876	6,756	5,061	4,630	4,996	5,312	8,219	10,890	104,913	-1.20%
Operations FY2018	14,530	14,843	8,418	7,748	6,771	6,324	3,933	2,664	2,462	3,490	5,822	8,695	85,700	-18.31%
Operations FY2019	11,692	11,975	8,013	5,230	3,840	3,065	2,597	2,169	2,655	3,473	5,955	9,153	69,817	-18.53%
Operations FY2020	14,364	14,367	9,830	5,308	4,323	4,129	2,976	2,769	2,404	1,376	1,825	3,729	67,400	-3.46%



# Nantucket Memorial Airport

## Operations FY 2016-2020



	JUL	AUG	SEP	OCT	NOV	DEC	JAN	FEB	MAR	APR	MAY	JUN
Operations FY2016	17,735	16,423	12,117	8,909	6,465	5,419	4,628	4,062	4,742	5,594	8,508	11,584
Operations FY2017	16,538	15,647	11,562	8,426	6,876	6,756	5,061	4,630	4,996	5,312	8,219	10,890
Operations FY2018	14,530	14,843	8,418	7,748	6,771	6,324	3,933	2,664	2,462	3,490	5,822	8,695
Operations FY2019	11,692	11,975	8,013	5,230	3,840	3,065	2,597	2,169	2,655	3,473	5,955	9,153
Operations FY 2020	14,364	14,367	9,830	5,308	4,323	4,129	2,976	2,769	2,404	1,376	1,825	3,729



# Southwest Ramp Operations

Southwest Ramp General Aviation Operations															
	JUL	AUG	SEP	OCT	NOV	DEC	JAN	FEB	MAR	APR	MAY	JUN	Total	% Change	
Operations FY2014	4,710	4,974	2,518	1,082	544	678	212	218	310	726	1,598	3,090	20,660		
Operations FY2015	5,112	5,120	2,558	1,358	606	654	178	146	242	868	2,004	3,070	21,916	5.7%	
Operations FY2016	5,988	5,680	3,344	1,414	800	868	312	344	462	794	2,120	3,536	25,662	14.6%	
Operations FY2017	6,334	6,026	3,570	1,858	1,180	1,214	430	410	362	916	2,064	3,600	27,964	8.2%	
Operations FY2018	6,096	6,262	3,146	1,834	1,208	1,082	336	418	468	940	1,962	3,702	27,454	-1.9%	
Operations FY2019	5,780	6,500	3,370	1,664	1,116	824	462	342	426	832	2,038	3,452	26,806	-2.4%	
Operations FY2020	5,884	6,222	3,398	1,314	808	980	320	360	184	292	1,032	3,336	24,130	-11.1%	
June 2020 vs. June 2019 Down 3.4%															

Southwest Ramp General Aviation Operations FY2014-2020

