



Operations FY2020 - FY2021

	CY 2020						CY2021						TOTAL
	JUL	AUG	SEP	OCT	NOV	DEC	JAN	FEB	MAR	APR	MAY	JUN	
Air Carrier	315	291	139	34	22	22	4	0	0	0	246	869	1,942
Air Taxi	4,369	4,889	4,635	3,412	1,905	1,384	1,055	954	1,262	1,591	2,699	4,811	32,966
General Aviation	3,241	3,765	3,223	2,215	1,378	858	755	667	1,069	1,108	1,997	3,231	23,507
Military	36	15	34	29	28	42	50	37	67	60	38	57	493
Intinerant	7,961	8,960	8,031	5,690	3,333	2,306	1,864	1,658	2,398	2,759	4,980	8,968	58,908
Civil	36	36	8	18	20	59	59	27	51	34	41	45	434
Military	2	5	0	6	3	3	4	18	43	6	27	14	131
Local	38	41	8	24	23	62	63	45	94	40	68	59	565
Operations	7,999	9,001	8,039	5,714	3,356	2,368	1,927	1,703	2,492	2,799	5,048	9,027	59,473
% Change	-44.31%	-37.35%	-18.22%	7.65%	-22.37%	-42.65%	-35.25%	-38.50%	3.66%	103.42%	176.60%	142.08%	-11.76%

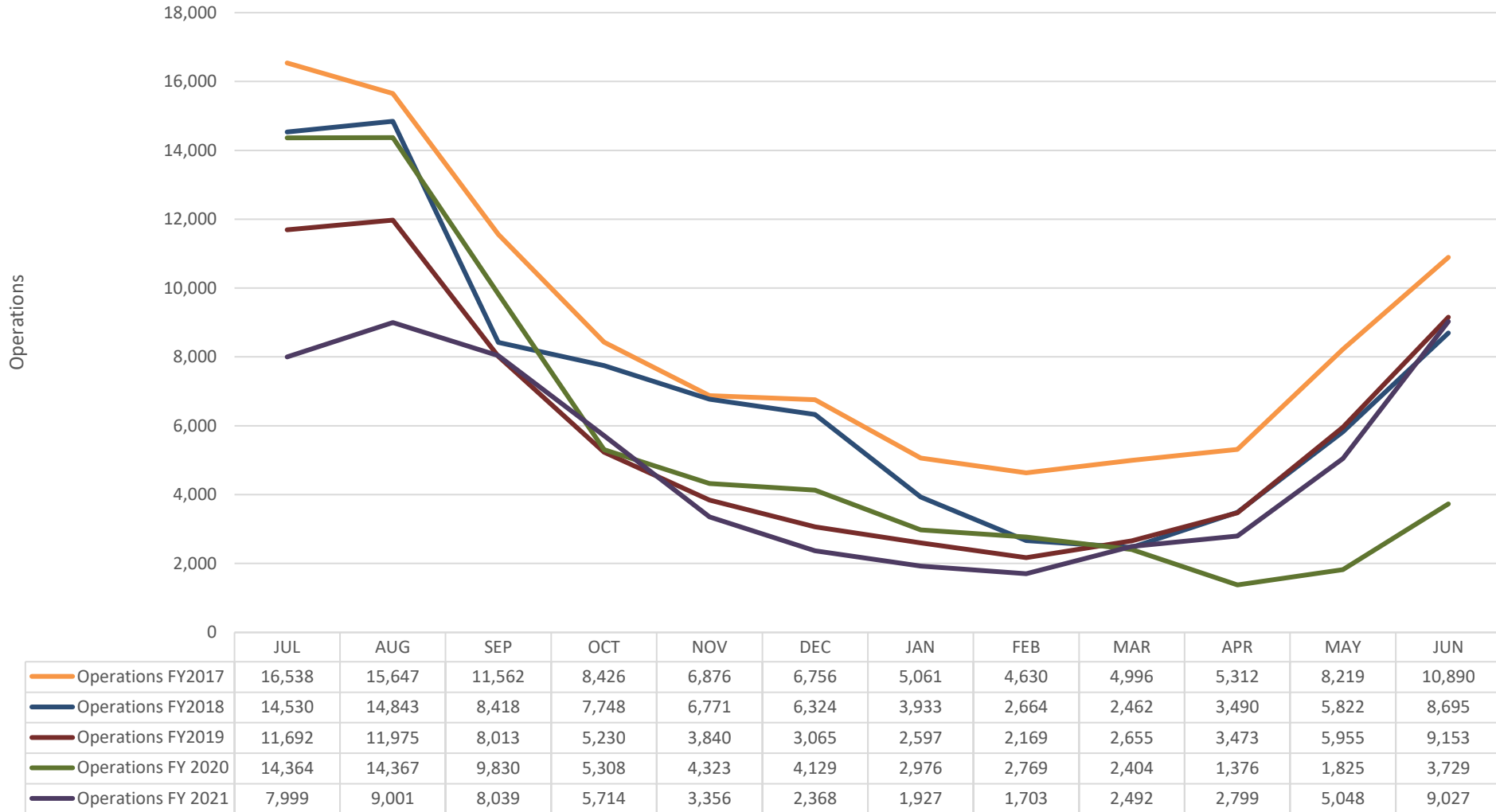
JUNE 2020 – JUNE 2021 UP 142.08%
YTD Down -11.76%

	JUL	AUG	SEP	OCT	NOV	DEC	JAN	FEB	MAR	APR	MAY	JUN	TOTAL	% Change
Operations FY2017	16,538	15,647	11,562	8,426	6,876	6,756	5,061	4,630	4,996	5,312	8,219	10,890	104,913	
Operations FY2018	14,530	14,843	8,418	7,748	6,771	6,324	3,933	2,664	2,462	3,490	5,822	8,695	85,700	-18.31%
Operations FY2019	11,692	11,975	8,013	5,230	3,840	3,065	2,597	2,169	2,655	3,473	5,955	9,153	69,817	-18.53%
Operations FY2020	14,364	14,367	9,830	5,308	4,323	4,129	2,976	2,769	2,404	1,376	1,825	3,729	67,400	-3.46%
Operations FY2021	7,999	9,001	8,039	5,714	3,356	2,368	1,927	1,703	2,492	2,799	5,048	9,027	59,473	-11.76%



Nantucket Memorial Airport

Operations FY 2017-2021





Nantucket Memorial Airport

JUNE 2021 SW Ramp Operations

Southwest Ramp General Aviation Operations	JUL	AUG	SEP	OCT	NOV	DEC	JAN	FEB	MAR	APR	MAY	JUN	Total	% Change
Operations FY2014	4,710	4,974	2,518	1,082	544	678	212	218	310	726	1,598	3,090	20,660	
Operations FY2015	5,112	5,120	2,558	1,358	606	654	178	146	242	868	2,004	3,070	21,916	5.7%
Operations FY2016	5,988	5,680	3,344	1,414	800	868	312	344	462	794	2,120	3,536	25,662	14.6%
Operations FY2017	6,334	6,026	3,570	1,858	1,180	1,214	430	410	362	916	2,064	3,600	27,964	8.2%
Operations FY2018	6,096	6,262	3,146	1,834	1,208	1,082	336	418	468	940	1,962	3,702	27,454	-1.9%
Operations FY2019	5,780	6,500	3,370	1,664	1,116	824	462	342	426	832	2,038	3,452	26,806	-2.4%
Operations FY2020	5,884	6,222	3,398	1,314	808	980	320	360	184	292	1,032	3,336	24,130	-11.1%
Operations FY2021	6,270	6,562	4,738	2,724	1,514	724	562	536	830	1,102	2,682	5,480	33,724	39.8%
June 2021 vs. June 2020 Up 64%														

Southwest Ramp General Aviation Operations FY2014-2021

