



NANTUCKET MEMORIAL AIRPORT

- yearly enplanement summary -
[Revenue Passengers Departing Nantucket]

ENPLANEMENTS

December 2009

In the year 2000, annual airport operations, as reported by the Tower, reached a high of 170,367. Four years of declining traffic followed the softening economy in the aftermath of 9/11. In 2006 the operations had recovered to a total of 161,685. 2007 operations were off 7.1% from 2006.

Air taxi operations by Cessna 402 operators Cape Air, Island Airlines and Nantucket Airlines reached a peak of 88,882 annual operations in 2000. After a 25% post 9/11 decline, operations for 2004, 2005 and 2006 showed a return to positive growth year over year.

Enplanements (number of passengers departing NMA) reached a peak of 302,161 passengers in the year 2000. In 2006 enplanements totalled 269,433.

2004 enplanements increased 5.97% over 2003. 2005 enplanements increased 2.48% over 2004. 2006 enplanements increased 8.21% over 2005. 2007 enplanements increased 3.23% over 2006. Enplanements for 2008 finished 7.3% below 2007.

Enplanements for the year 2009 were down 21% from 2008.

Jack F. Wheeler
Environmental Coordinator



NANTUCKET MEMORIAL AIRPORT

- yearly enplanement summary -
 [Revenue Passengers Departing Nantucket]

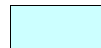
<i>Year</i>	<i>Comment</i>	<i>Enplanements</i>	<i>% Change Base Year</i>	<i>% Change Prior Year</i>
1976		43,807	(50.68)	
1977		51,954	(53.84)	18.60
1978		60,816	(58.28)	17.06
1979		63,245	(61.86)	3.99
1980		71,838	(60.99)	13.59
1981	FAA Controllers' Strike	88,820	(47.91)	23.64
1982		112,558	(33.99)	26.73
1983		145,784	(14.51)	29.52
1984		165,809	(2.77)	13.74
1985		184,148	7.99	11.06
1986 <i>Base Year</i>	170,524	0.00	(7.40)
1987		140,388	(17.67)	(17.67)
1988		134,537	(21.10)	(4.17)
1989		125,169	(26.60)	(6.96)
1990		128,343	(24.74)	2.54
1991		134,482	(21.14)	4.78
1992		155,222	(8.97)	15.42
1993		179,451	5.24	15.61
1994		200,474	17.56	11.72
1995		219,563	28.76	9.52
1996		217,170	27.35	(1.09)
1997	Tower Upgraded to Level II	253,985	48.94	16.95
1998		277,030	62.46	9.07
1999		299,490	75.63	8.11
2000		302,161	77.20	0.89
2001		276,924	62.40	(8.35)
2002		257,997	51.30	(6.83)
2003		229,301	34.47	(11.12)
2004		242,975	42.49	5.96
2005		249,002	46.02	2.48
2006		269,433	58.00	8.21
2007		278,133	63.10	3.23
2008		257,755	51.15	(7.33)
2009	..Updated December 31, 2009..	203,786	19.51	(20.94)

NANTUCKET MEMORIAL AIRPORT

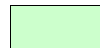
- 2009 monthly enplanements -

AIRLINE	JAN	FEB	MAR	APR	MAY	JUN	JUL	AUG	SEP	OCT	NOV	DEC	TOTAL
Cape Air (<i>KAP</i>)	1160	1105	1296	1960	3821	4461	7660	9412	6550	3793	1779	1744	44,741
Colgan (<i>USAirways - CJC</i>)	Closed	Closed	Closed	Closed	Closed	399	1138	1849	1252	18	Closed	Closed	4,656
Continental Connection (<i>UGA</i>)	Closed	Closed	Closed	Closed	Closed	892	1567	1871	338	Closed	Closed	Closed	4,668
Delta Express (<i>Freedom Air</i>)	Closed	Closed	Closed	Closed	Closed	Closed	Closed	Closed	Closed	Closed	Closed	Closed	0
Delta Express (<i>Com Air</i>)	Closed	Closed	Closed	Closed	Closed	1374	1880	2249	401	Closed	Closed	Closed	5,904
Island Air (<i>ISA</i>)	3607	3460	4089	5022	5232	5532	5985	6014	5342	5023	4153	4537	57,996
JetBlue Airways	Closed	Closed	Closed	Closed	433	1386	2781	3473	751	Closed	Closed	Closed	8,824
Nantucket Air (<i>ACK</i>)	2697	2622	2855	3557	3982	3395	3977	3896	3252	2716	2096	1964	37,009
Nantucket Shuttle	2287	2314	3012	3122	3402	3441	3362	3297	2741	2548	2381	2217	34,124
Tradewind Aviation	45	1	0	51	193	246	581	687	320	170	56	45	2,395
USAirways (<i>Air Wisconsin - AWI</i>)	Closed	Closed	Closed	Closed	Closed	155	1357	1632	325	Closed	Closed	Closed	3,469
Monthly Total	9,796	9,502	11,252	13,712	17,063	21,281	30,288	34,380	21,272	14,268	10,465	10,507	203,786
% Change Prior Year	(30.51)	(30.35)	(30.60)	(26.26)	(25.13)	(25.40)	(16.33)	(15.34)	(7.38)	(23.62)	(20.44)	(14.46)	(20.94)
12 Month Running Total	253,455	249,314	244,353	239,470	233,743	226,499	220,589	214,358	212,664	208,251	205,562	203,786	

Color Code Key:



Adjusted



Estimate

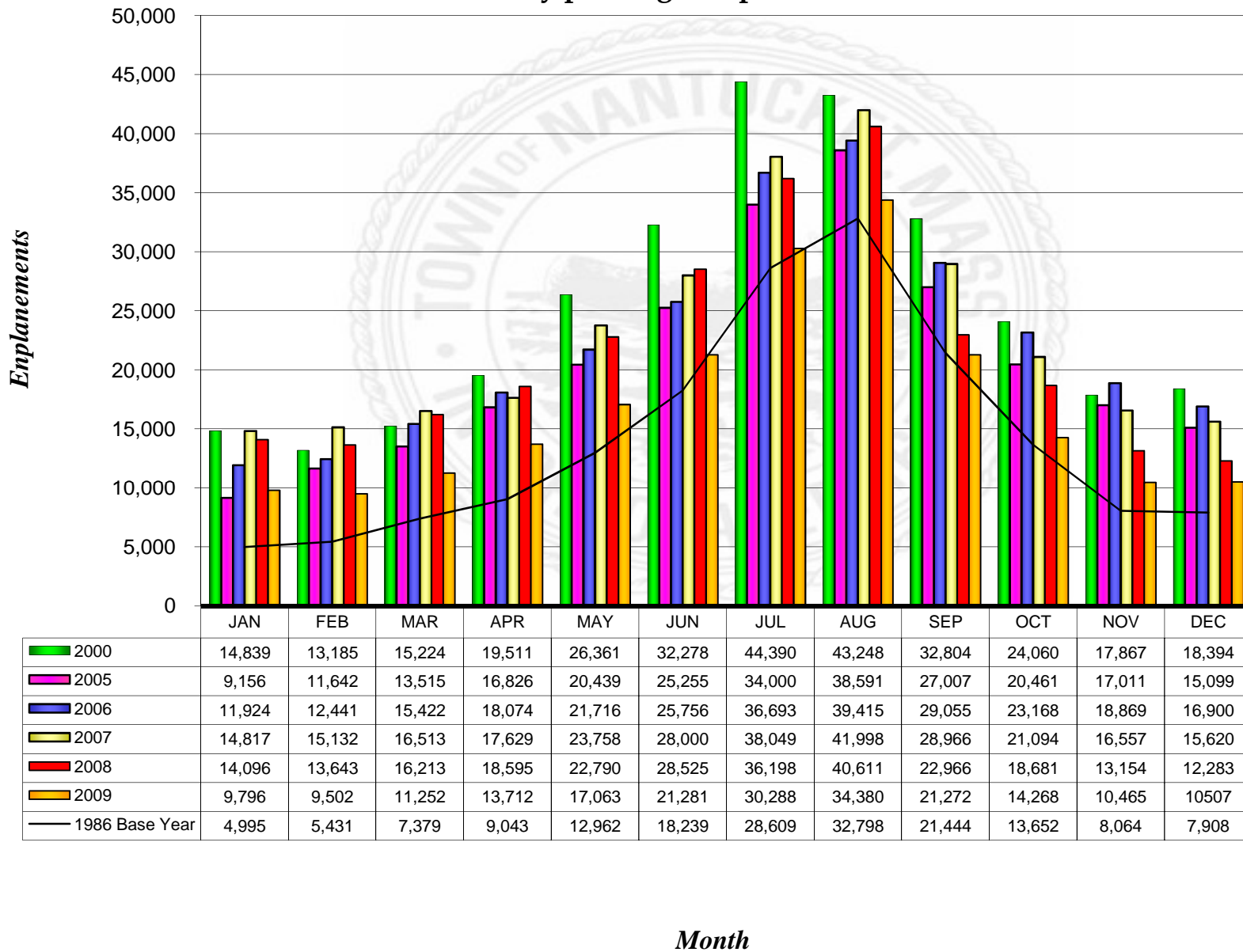


Closed



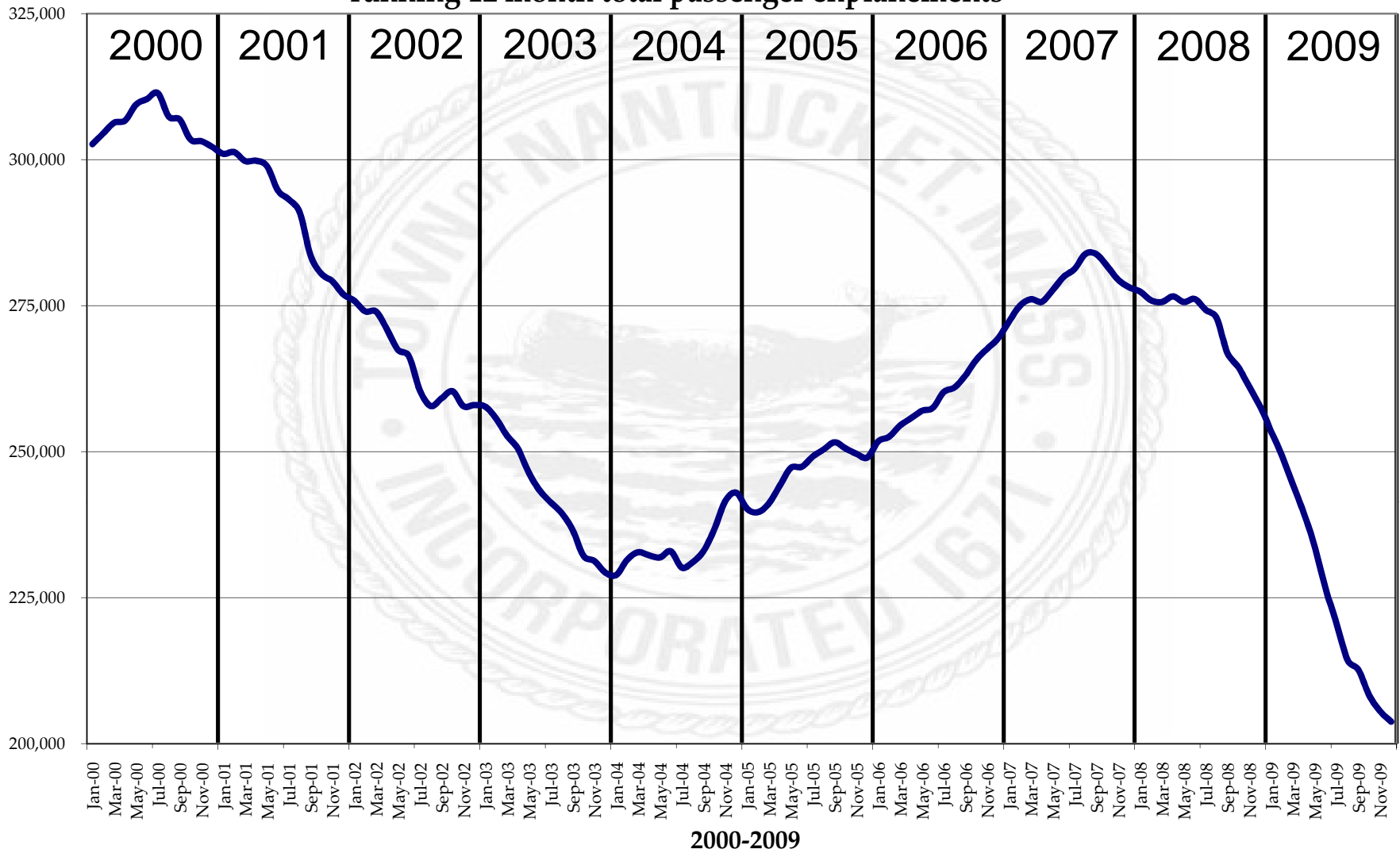
NANTUCKET MEMORIAL AIRPORT

- monthly passenger enplanements -



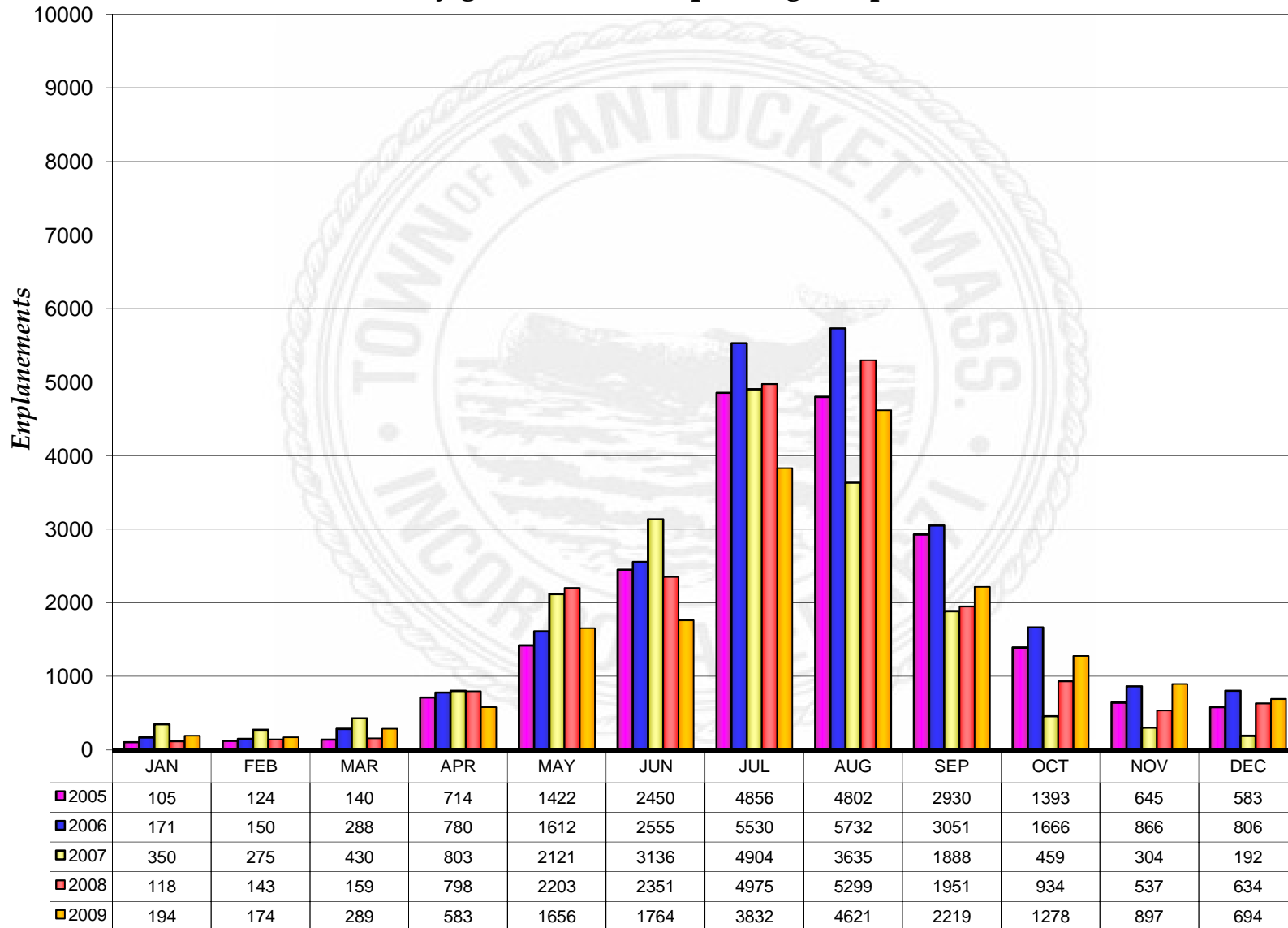
NANTUCKET MEMORIAL AIRPORT

- running 12 month total passenger enplanements -



NANTUCKET MEMORIAL AIRPORT

- monthly general aviation passenger enplanements -



<u>Annual Totals</u>	
2005	20,164
2006	23,207
2007	18,497
2008	20,102
2009	18,201

Month