



Nantucket Memorial Airport

Operations FY2015 vs. FY2016

		CY 2015						CY 2016							
		JUL	AUG	SEP	OCT	NOV	DEC	JAN	FEB	MAR	APR	MAY	JUN	TOTAL	
FY 2016	ITINERANT	Air Carrier	280	310	162	56	0	0							808
		Air Taxi	11,164	10,138	7,886	6,157	4,360	3,461							43,166
		General Aviation	6,157	5,941	3,970	2,607	2,036	1,685							22,396
		Military	99	29	69	45	64	257							563
		TOTAL Intinerant	17,700	16,418	12,087	8,865	6,460	5,403							
LOCAL	TOTAL	Civil	22	5	30	32	5	16						110	
		Military	13	0	0	12	0	0						25	
	TOTAL Local	35	5	30	44	5	16							135	
	TOTAL Operations	17,735	16,423	12,117	8,909	6,465	5,419								67,068
		% Change	5.53%	-5.99%	6.88%	5.27%	3.01%	-21.02%							

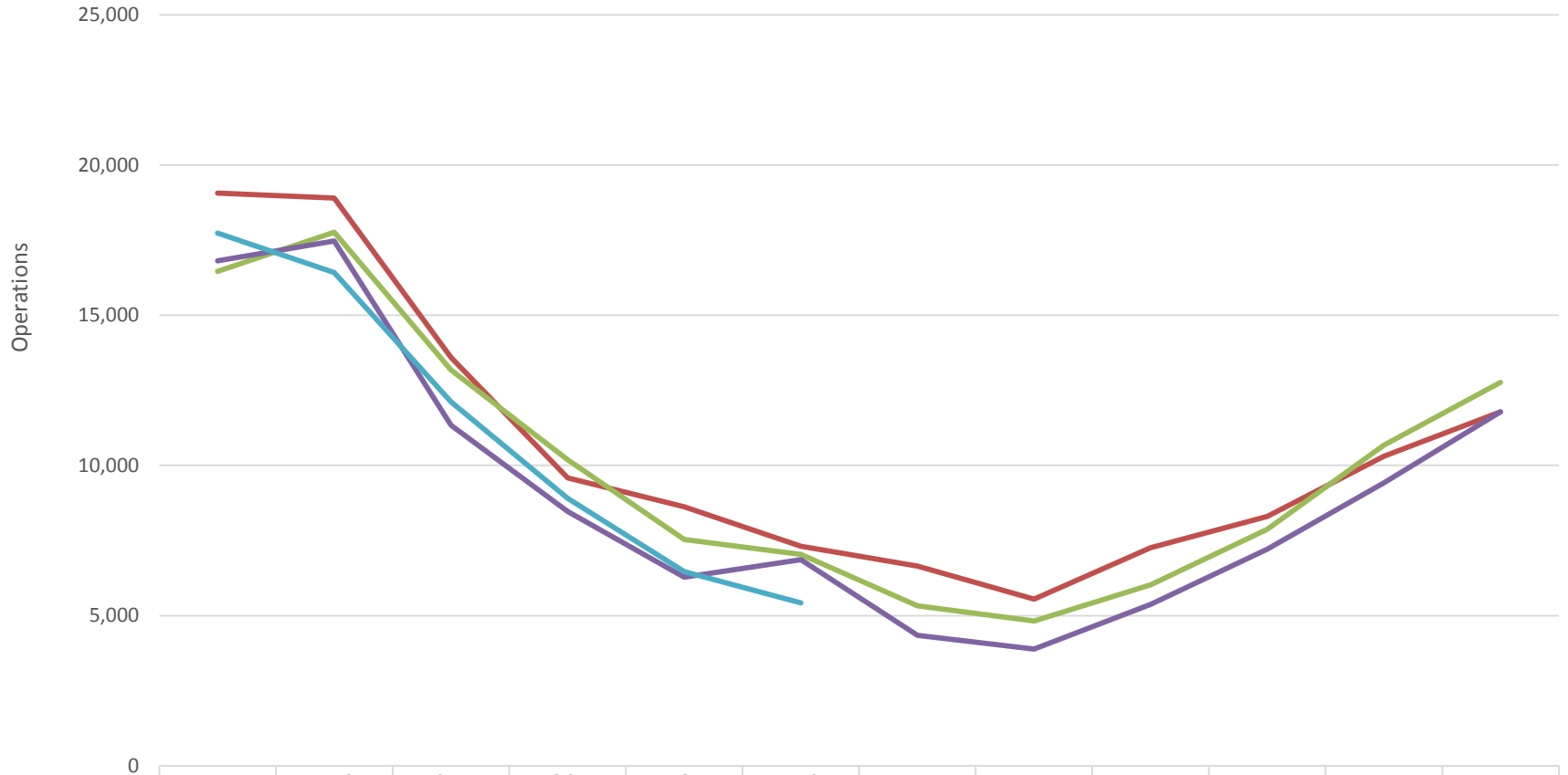
December 2015 vs. December 2016 Down - 21.02%
YTD Down - 0.21%

	JUL	AUG	SEP	OCT	NOV	DEC	TOTAL	% Change
Operations FY2012	17,069	16,571	11,730	9,580	7,892	8,238	71,080	
Operations FY2013	19,062	18,899	13,589	9,581	8,624	7,309	77,064	8.42%
Operations FY2014	16,459	17,761	13,170	10,184	7,532	7,040	72,146	-6.38%
Operations FY2015	16,805	17,470	11,337	8,463	6,276	6,861	67,212	-6.84%
Operations FY2016	17,735	16,423	12,117	8,909	6,465	5,419	67,068	-0.21%



Nantucket Memorial Airport

Operations FY 2013-2016



	JUL	AUG	SEP	OCT	NOV	DEC	JAN	FEB	MAR	APR	MAY	JUN
Operations FY2013	19,062	18,899	13,589	9,581	8,624	7,309	6,645	5,546	7,257	8,305	10,302	11,779
Operations FY2014	16,459	17,761	13,170	10,184	7,532	7,040	5,329	4,821	6,031	7,870	10,675	12,767
Operations FY2015	16,805	17,470	11,337	8,463	6,276	6,861	4,341	3,883	5,378	7,209	9,416	11,786
Operations FY2016	17,735	16,423	12,117	8,909	6,465	5,419						